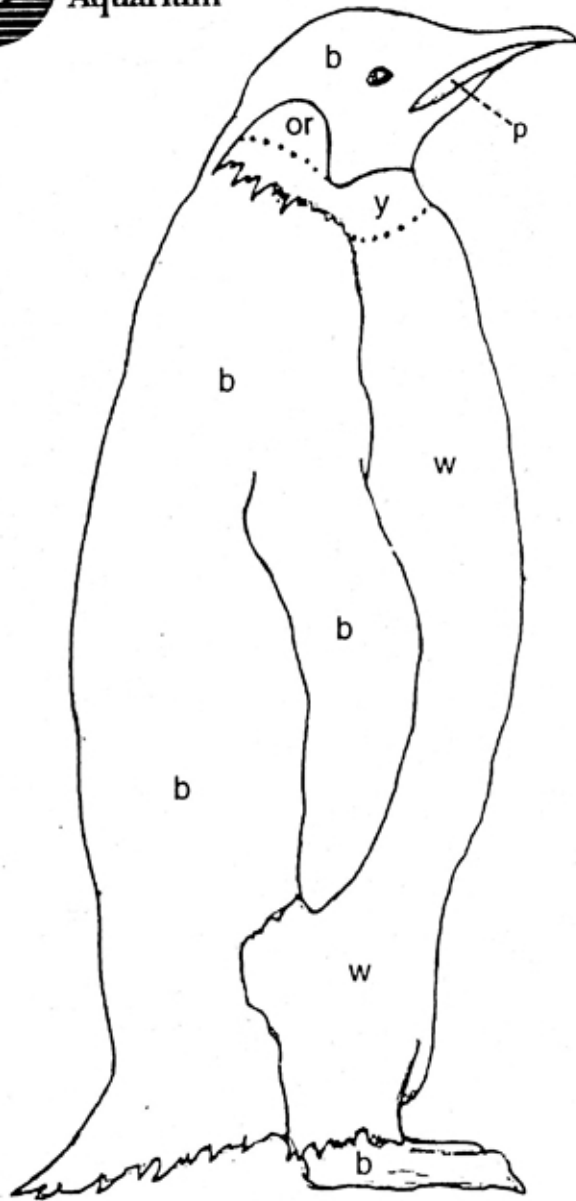




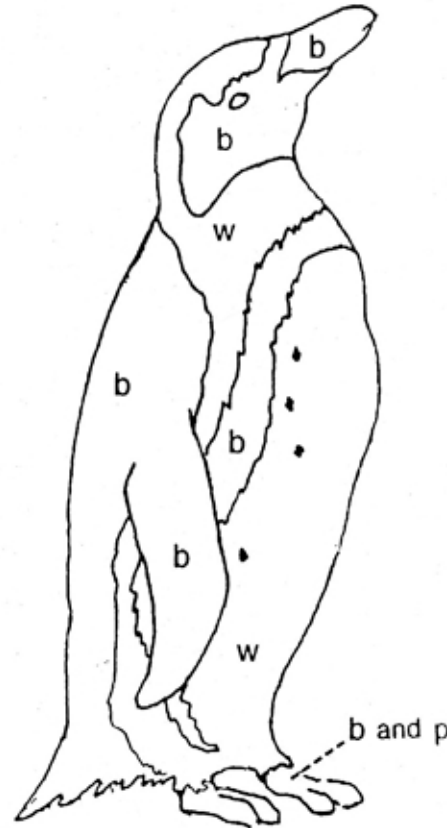
NOT ALL PENGUINS ARE ALIKE!

All seventeen species of penguins live in the southern hemisphere, in locales ranging from the Galapagos Islands near the equator to the coast of Antarctica. Color these four different penguins using the key below.

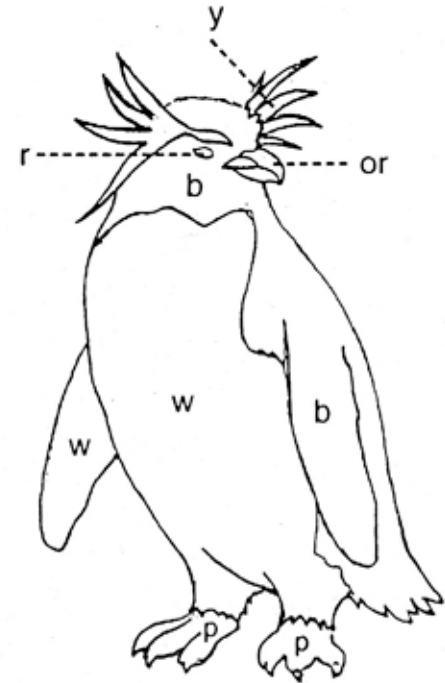
- b= black
- w= white
- p= pink
- r= red
- or= orange
- y= yellow
- bg= blue gray



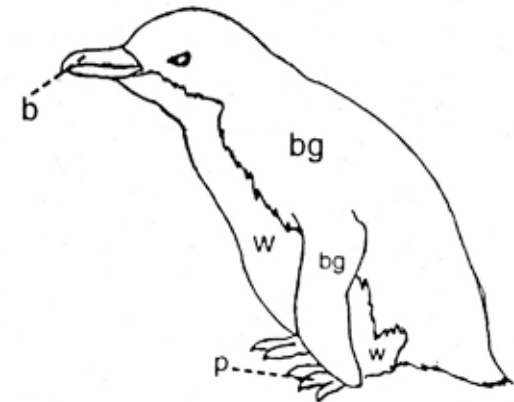
The **Emperor Penguin**, the largest penguin, is 4 feet tall and weighs up to 90 pounds and lives on the coast of Antarctica.



A threatened species, the **African Penguin** (sometimes called Blackfooted Penguin) is found only off the west coast of South Africa. Many of those in our exhibit were born here.



The **Rockhopper Penguins** here at the Aquarium are from South America and Gough Island (located between South America and South Africa).



The **Little Blue Penguin** is the smallest penguin, 15 inches tall and 2 to 3 pounds. It is found in coastal Australia and New Zealand.